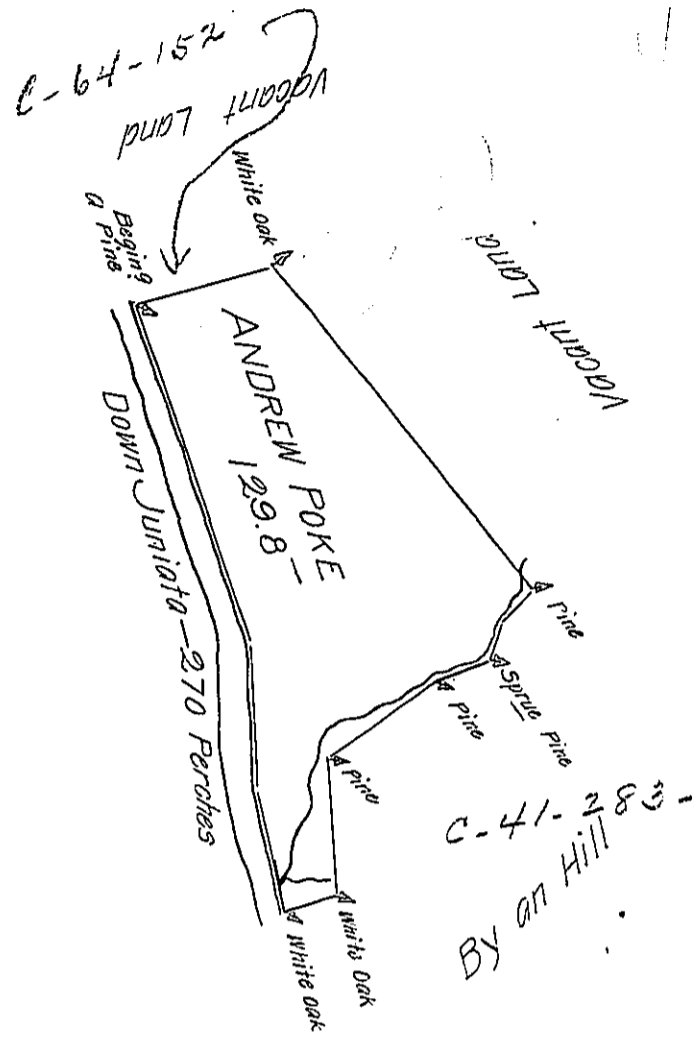


The Courses and Distances

- S 19 E 156
- S 2 E 62
- S 13 E 52
- N 77 E 25
- N 5 W 60
- N 57 E 60
- N 71 E 26
- N 21 E 18
- N 48 E 20
- N 40 W 183
- S 75 W 65



The Draught of a Tract of Land called Graft's Grove situate on the North Side of Juniata River in the County of Cumberland containing One Hundred Twenty Nine Acres One Hundred thirty Nine Perches with the usual Allowance of Six Acres P Cent. for Roads Survey'd the 15th day of August Anno Dom: 1767 In Pursuance of a Warrant from the Honble the Proprietaries to Andrew Poake Bearing Date at Philad^e the 11th day of June Anno Dom. 1755.

Wm Maclay D.S.

To John Lukens Esq. S.G. }
of Pennsylvania }

IN TESTIMONY that the above is a copy of the original remaining on file in the Department of Internal Affairs of Pennsylvania, made conformably to an Act of Assembly approved the 16th day of February, 1833, I have hereunto set my Hand and caused the Seal of said Department to be affixed at Harrisburg, this eighth day of June 1906.

Geo. N. Johnson
Secretary of Internal Affairs.